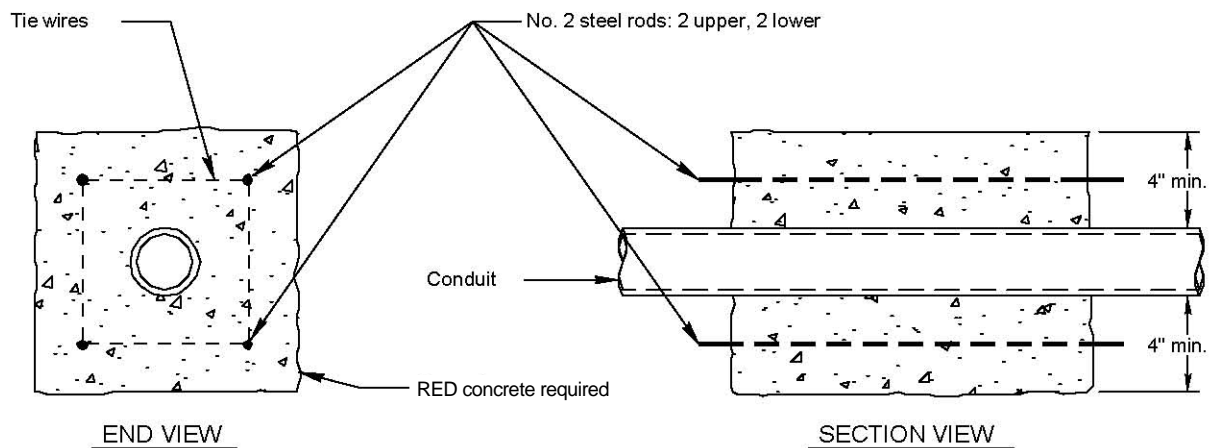
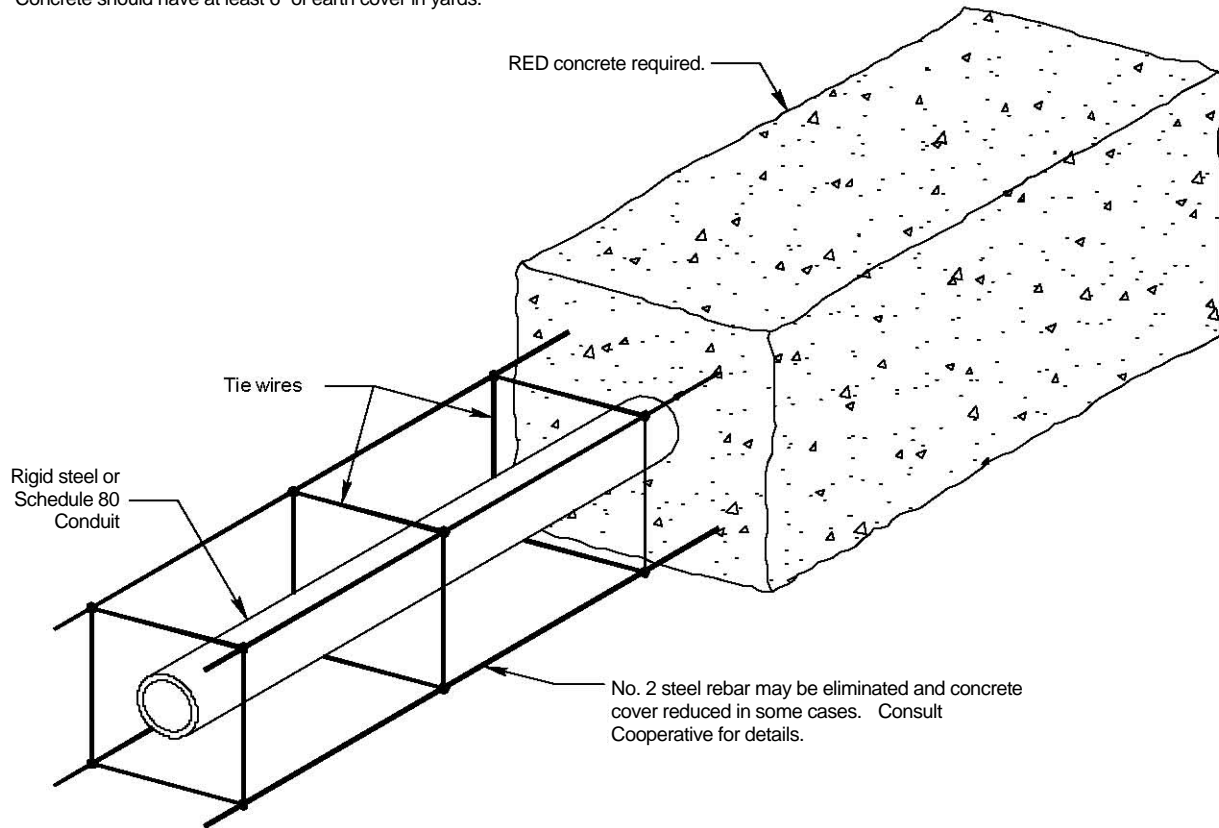


1. Concrete encased conduit is normally required in areas where minimum NESC depth (24" for secondary, 30" for primary) cannot be obtained, or in areas where there is a high likelihood of dig-in or soil subsidence. Consult with the Cooperative prior to construction if any of these conditions are anticipated.
2. Rigid steel or Schedule 80 PVC conduit required.
3. Concrete should have at least 6" of earth cover in yards.



CALL 48 HOURS BEFORE YOU DIG – Dial 811
It shall be the Member's responsibility to stay clear of all underground facilities.

TYPICAL DETAIL OF CONCRETE ENCASED CONDUIT
DRAWING 8.6-4
 August 2010
 NOT TO SCALE

